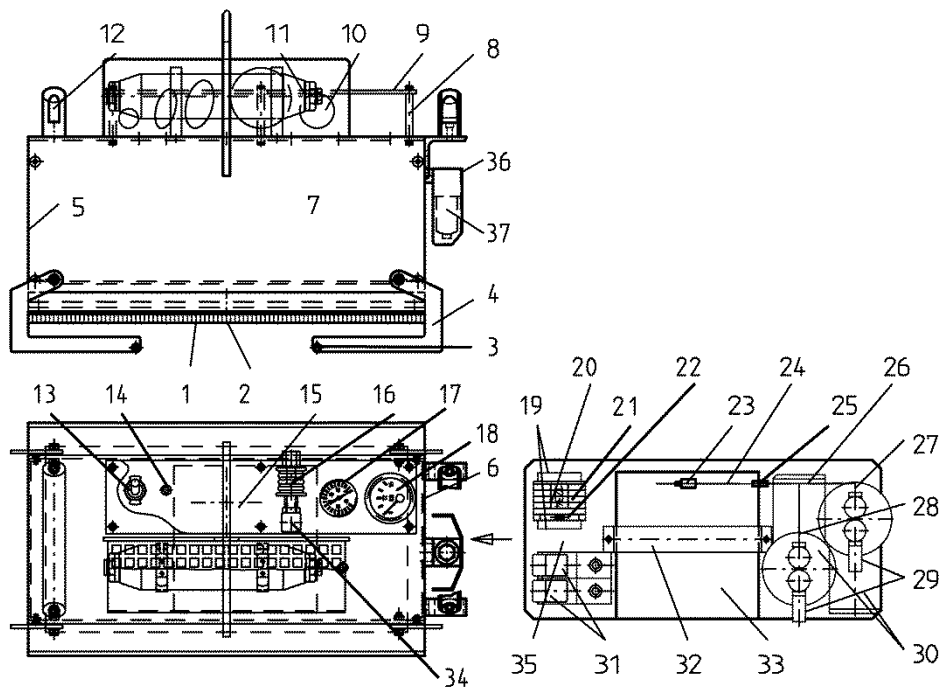


## E 820 SPARE PARTS LIST

## Gamma-Levator



Item No.	Description	Gamma-Levator 820 100		
		Unit	Order No.	Price €/Unit
1	Suction pad 260x460 compl. with elbow coupling QSL-1/8-8 (043 481), sealing, fine filter and hose	1	043 314	
2	Sealing Dm 19 mm	1	043 403	
3	Swivelling lever connecting rod, round Ø10x198,5 with inside thread M6	2	043 874	
4	Swivelling lever for storing of the Gamma 200	4	043 178	
5,6	Lateral cover, colour turquoise	1	043 151	
7	Housing Gamma 200; colour turquoise	1	043 316	
8	Threaded bolt Ø8x60 galvanized	6	043 318	
9	Covering transparent	1	043 152	
10	L-plug type coupling QSL-1/4-8	1	043 490	
11	Vacuum storage	1	043 488	
12	Positioning handle, aluminium	1	043 322	
13	Rocker switch (protection cap 047 619, identification plate EIN-AUS (ON-OFF) 047 620)	1	047 618	
14	Charging bush	1	043 307	
15	Flashing lamp red	1	043 311	
16	Manual sliding switch + threaded plug (048 979)	1	049 485	
17	Pressure gauge 0 to -1 bar; elbow coupling QSLF-1/8-8B (043 483) within the housing	1	043 313	
18	Voltmeter	1	054 804	
19	Binding post, width 10 mm	2	043 918	
20	Binding post grey	2	043 917	
21	Binding post blue	3	043 922	
22	Holding device for fuse (used light current 8 A slow fuse)	1	043 932	
23	Vacuum filter VAF-PK-6	1	043 485	
24	Plastic hose PUN-8x1.25 black and white; length 1 m	1	043 494	
25	Non-return valve	1	049 484	
26	T-plug type coupling QST-1/8-8 (only for Levators with 2 pumps)	1	043 862	
27	L-plug type coupling QSL-1/8-8 (only for Levators with 2 pumps)	1	043 481	
28	Plug type coupling QS-1/8-8; when using 1 pump place non-return valve 043 479	1	043 486	
29	Sound absorber	1	043 333	
30	Vacuum diaphragm pump ASF	2	043 935	
31	Vacuum switch VPEV-1/8 with plug type coupling QS-1/8-8 (043 486)	2	043 482	
32	Handle to fix the rechargeable battery	1	043 923	
33	Battery, maintenance-free, rechargeable, 12 V	1	820 270	
34	L-elbow piece cone-shaped; bulkhead coupling QSSF-1 / 4-8 (043 493); QSL-8H (043 873) within the housing	1	049 486	
35	Distributor QSLV-1/8-8 within the housing	1	043 484	
36	Protection plate for water trap	1	046 264	
37	Water trap	1	046 266	