

**Mikasa**

## ***INTER-LOCKING BLOCK PLATE COMPACTOR***

# **MVB-152H**

## **PARTS LIST**



**405-10101**

[www.mikasas.com](http://www.mikasas.com)



# PARTS REMARK INDEX

## How to read the marks and remarks used in this parts book.

### Section 1 : Explanation of Code Use In “MRK” Column

OO : Interchangeable between the new part and the old one.

XX : Not Interchangeable between new and old.

OX : New part is usable for the old machine but the old part is not usable for the new machine.

XO : The old part is usable for the new machine but the new part is not usable for the old machine.

Note : In case of the lack of interchangeability between the new part and old part, a new part may be used by replacing all other parts found in the assembly. In this case, refer to section 2 for instruction on identifying other parts involved in a new assembly.

AD : Newly established(added)

DC : Suspended(discontinued)

NC : Part number changed

QC : Quantity used has been changed

NS : Not supplied individually but supplied in an assembly or a group.

AS : Special part designed to allow interchangeability between new and old part.

CR : Correction

### Section 2 : Items Found In “Remark” Column

Serial Numbers — Where indicated, this indicates a serial number range (inclusive) where a particular part is used.

Model Number — Where indicated, this shows that the corresponding part is utilized only with this specific model number or model number variant.

# or \* : All parts with the same number following # or \* belong to the same assembly. this part cannot be interchanged individually with any other assemblies to replace an old part (indicated by #), with a new part(indicated by\*), then all other parts of that assembly must be replaced with new ones.

Note : If more than one of the same reference number is listed, the last one listed indicates newest(or latest)part available.

### Section 3: Example

REF NO.	PART NO.	PART NAME	QTY	MRK	REMARKS
457(1)	5122-09230	Hinge Metal, Upper/24g	1		-1070 #3 (5)
457(2)	5072-09420	Hinge Metal, Upper M16	1	OX(3)	U1071-(6) *3(7)

(1) Old part

(2) New part

(3) New part usable with old machine, but old part not usable with new machine (reference section 1).

(4) Old part number is used through this machine serial number.

(5) Old part, used in an assembly with other parts marked with #3. To use this part on a new machine, all other parts in this assembly must be replaced with old ones.

(6) New part put into use starting with this serial number and is still current.

(7) New part used in an assembly with other parts marked \*3, to use this part as a replacement for an old part, all other \*3 marked parts must be changed at the same time.

### Section 4: Items Found In “MK2” Column

(only for suspended products)

! OO (“OO” is shown in figure) : The part shown in lower line is supplied.

! SD : Not available due to termination of production.

! NS : Not supplied individually, but supplied in an assembly or a group.

! PD : Supplied as unit product.

SS : Not available after stock run out.

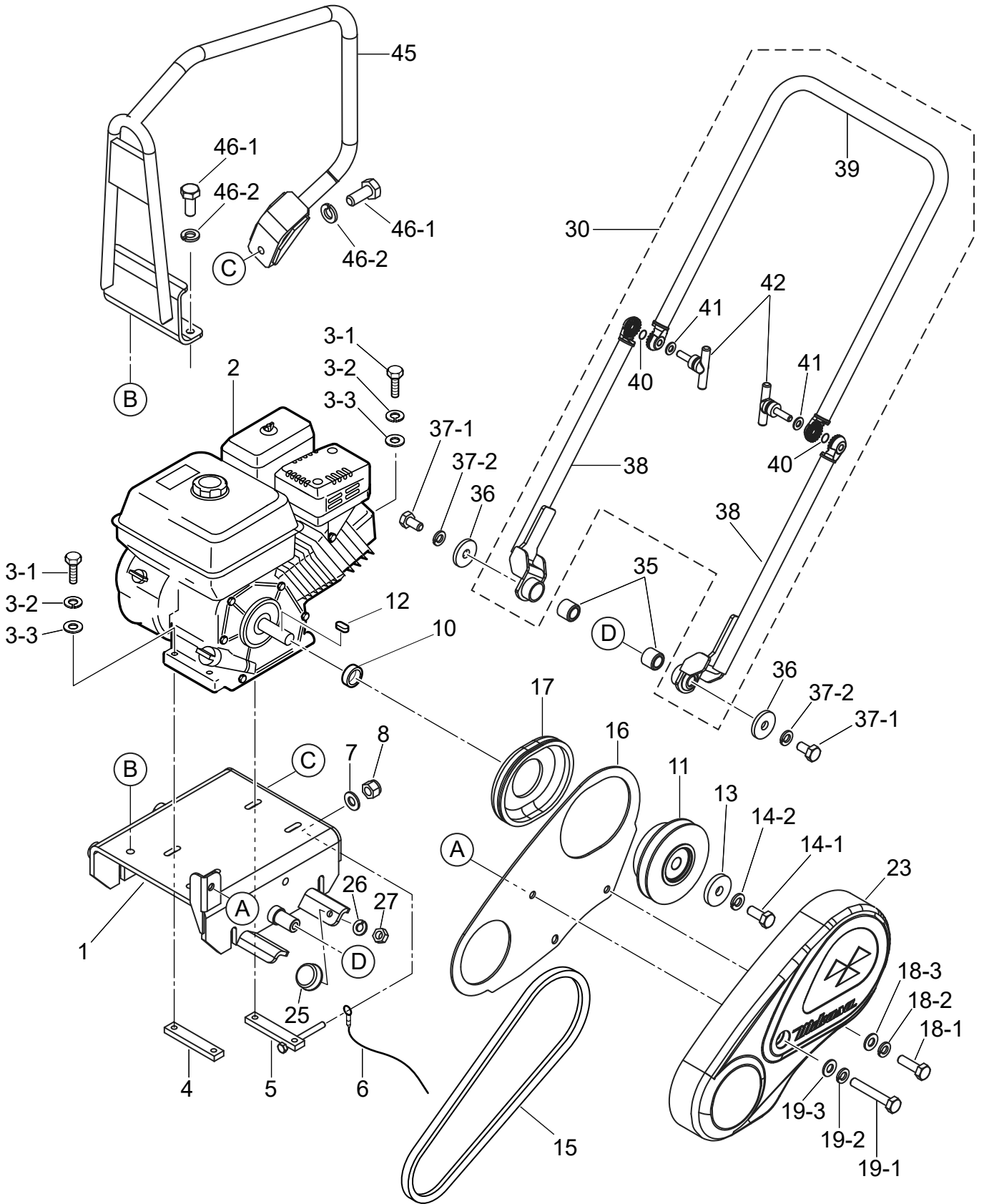
(The contents of this parts catalog are subject to change without notice.)

# MVB-152H

PDV0

## BODY

## 本体



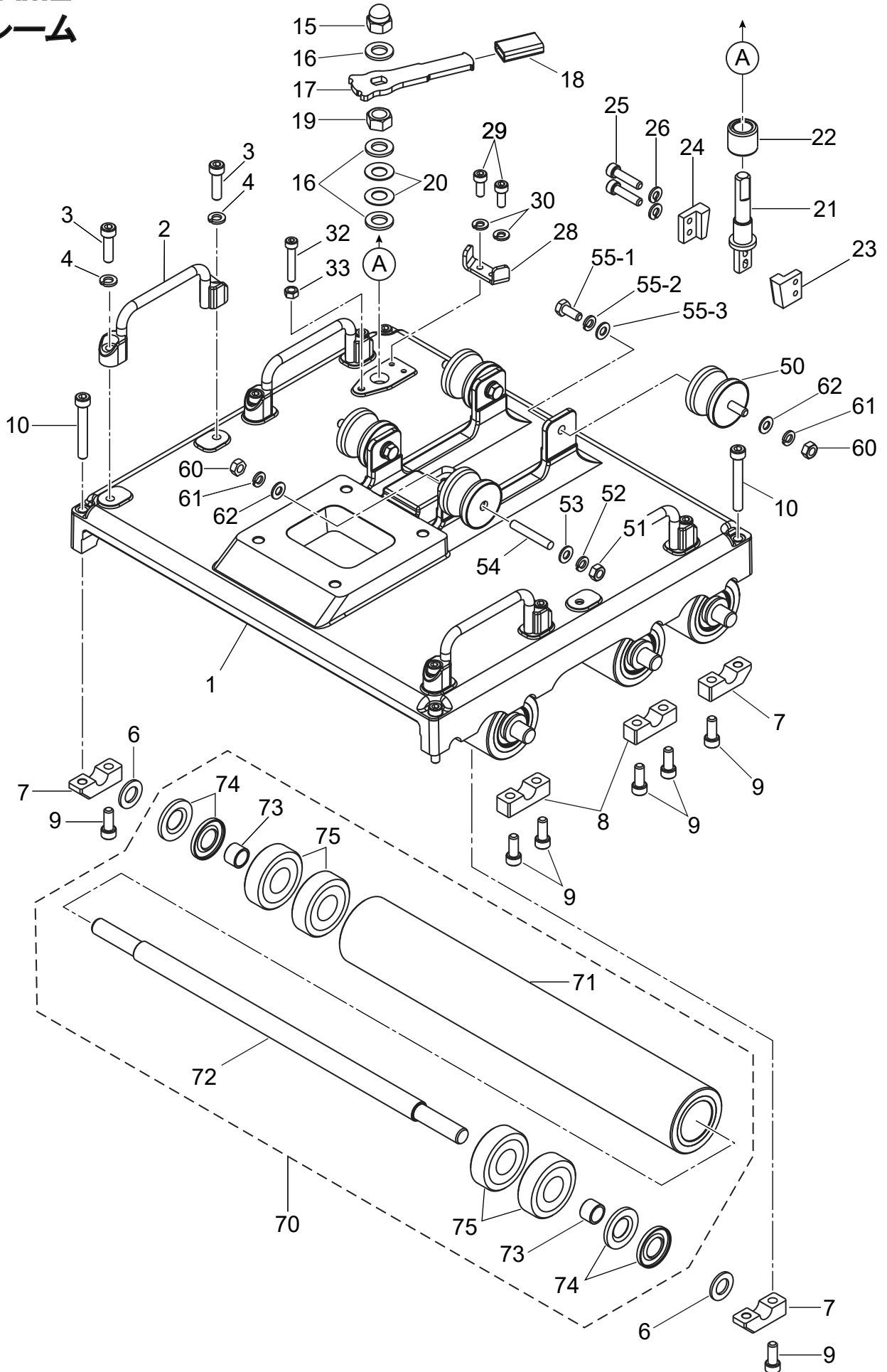
REF NO.	PART NO.	PART NAME	Q' TY	MRK	MK2	REMARKS
1	4222-20710-GR	BASE (GR) /MVB-152H	1			GREEN
1	4222-20710-OR	BASE (OR) /MVB-152H	1			ORANGE
2	9122-16016	ENGINE AY/GX160UT2-SMXE	1			
3 -1	0012-20845	BOLT 8X45 T	4		**	
3 -2	0302-08200	SW M8	4		**	
3 -3	0311-08160	PW M8	4		**	
4	4044-12290	ENGINE NUT	1			
5	4134-36870	ENGINE NUT, REAR /MVC-60	1			
6	9594-04350	EARTH WIRE	1			
7	0311-08160	PW M8	1		**	
8	0227-10809	NYLON NUT M8	1		**	
10	4084-21270	CLUTCH SPACER 20. 2X25X9. 4	1			
11	4133-32920	CLUTCH AY S20-A1-124/EY20	1			
12	9514-01740	KEY 5X5X20	1			
13	9524-00130	WASHER 9304	1			
14 -1	0012-20820	BOLT 8X20 T	1		**	
14 -2	0302-08200	SW M8	1		**	
15	0701-00312	V-BELT RPF-3310	1		**	
16	4222-20700	BELT COVER (IN) /MVB-152H	1			
17	4183-43421	COVER SEAL (E/G) /F60, F70	1			
18 -1	0012-21035	BOLT 10X35 T	1		**	
18 -2	0302-10250	SW M10	1		**	
18 -3	0311-10160	PW M10	1		**	
19 -1	0012-21053	BOLT 10X65 T	1		**	
19 -2	0302-10250	SW M10	1		**	
19 -3	0311-10160	PW M10	1		**	
23	4182-16465-GR	BELT COVER / MVC-F60, F70	1			GREEN
23	4182-16469-OR	BELT COVER / MVC-F60, F70	1			ORANGE
23	4182-16470	BELT COVER MQ-OR/F60, 70	1			MQ
25	4224-75430	STOPPER RUBBER/MVB-152H	2			
26	0302-08200	SW M8	2		**	
27	0203-08060	NUT M8	2		**	
30	4229-10010	FOLDING HANDLE CP/152H	1			INCL. 38-42
35	4044-33430	RUBBER 20X32X28. 5/52H	2			
36	9524-03450	WASHER 11X35X4. 5	2			
37 -1	0012-21020	BOLT 10X20 T	2		**	
37 -2	0302-10250	SW M10	2		**	
38	4222-20760	HANDLE (LOWER) /MVB-152H	2			
39	4222-20770	HANDLE (UPPER) /MVB-152H	1			
40	0502-00080	O-RING P-8	2		**	
41	0311-10160	PW M10	2		**	
42	9594-10490	T-KNOB M10X33L	2			
45	4181-22410	GUARD HOOK/MVC-F80	1			
46 -1	0012-21025	BOLT 10X25 T	3		**	
46 -2	0302-10250	SW M10	3		**	

# MVB-152H

PDW0

## FRAME

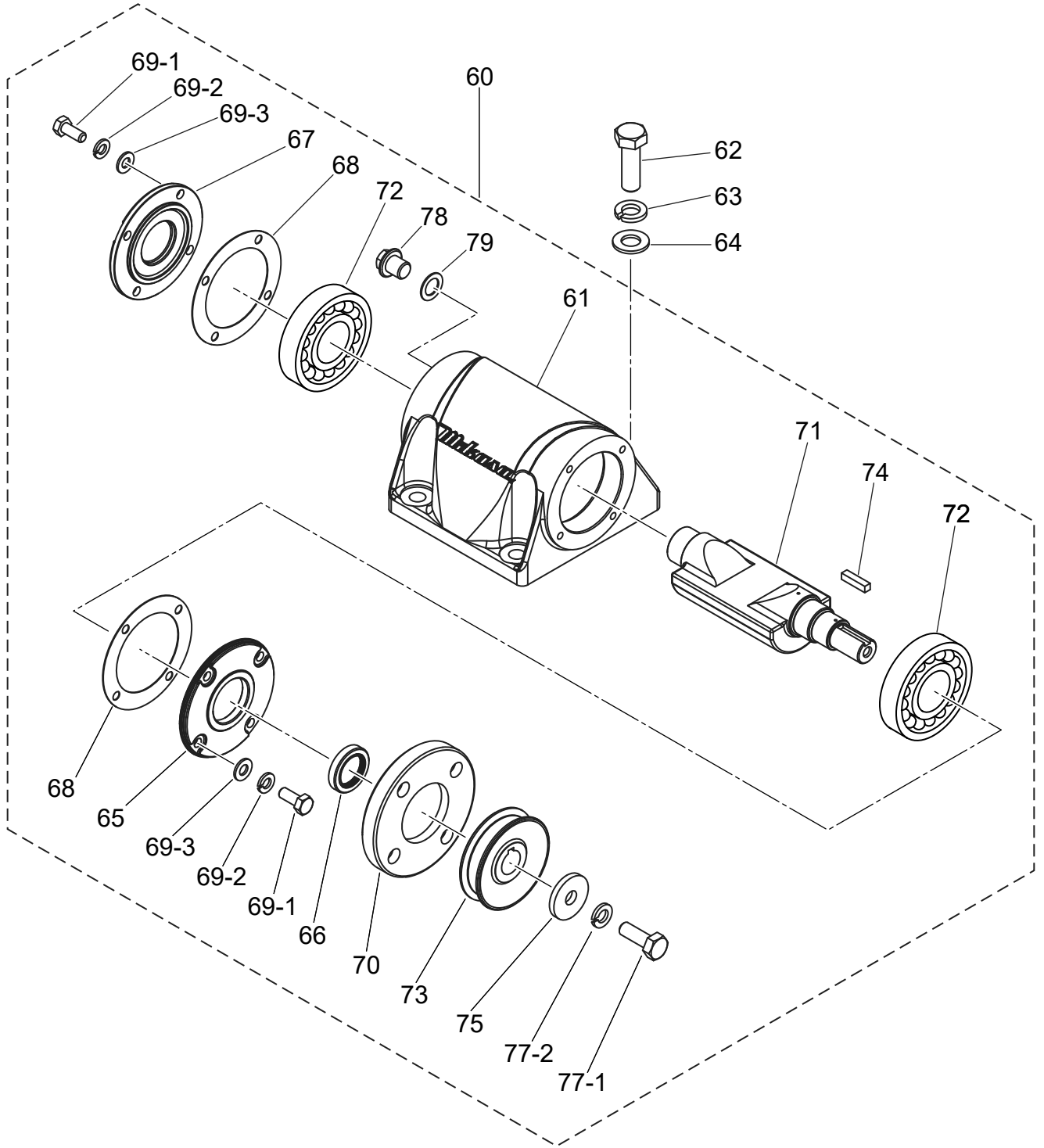
## フレーム



REF NO.	PART NO.	PART NAME	Q' TY	MRK	MK2	REMARKS
1	4221-23270-GR	FRAME (GR) /MVB-152H	1			GREEN
1	4221-23270-OR	FRAME (OR) /MVB-152H	1			ORANGE
2	4223-58790	LIFTING GRIP/MVB-152H	4			
3	0015-21035	SOCKET HEAD BOLT 10X35 T	8		**	
4	0302-10250	SW M10	8		**	
6	9524-02281	WASHER 21363 (DELFIN)	8			
7	4224-75350	SHAFT HOLDER (END) /152H	4			
8	4224-75360	SHAFT HOLDER (INSIDE) /152H	4			
9	0091-10070	SOCKET HEAD BOLT 10X25 ZN	12		**	
10	0015-21054	SOCKET HEAD BOLT 10X70 T	4		**	
15	0221-21613	CAP NUT M16	1		**	
16	0311-16260	PW M16	3		**	
17	4224-75370	BRAKE LEVER/MVB-152H	1			
18	4224-75380	RUBBER TUBE 15D-20D-42L	1			
19	0203-16130	NUT M16	1		**	
20	0322-16350	CONICAL SPRING WASHER M16	2		**	
21	4224-75390	BRAKE BOLT/MVB-152H	1			
22	4044-33430	RUBBER 20X32X28.5/52H	1			
23	4224-75400	BRAKE (HOLE)MVB-152H	1			
24	4224-75410	BRAKE (FEMALE) /MVB-152H	1			
25	0091-10039	SOCKET HEAD BOLT 6X25 ZN	2		**	
26	0302-06150	SW M6	2		**	
28	4224-75420	BRAKE GUIDE/MVB-152H	1			
29	0015-20615	SOCKET HEAD BOLT 6X15 T	2		**	
30	0302-06150	SW M6	2		**	
32	0091-10052	SOCKET HEAD BOLT 8X45 ZN	1		**	
33	0203-08060	NUT M8	1		**	
50	9390-10430	SHOCK ABSORBE D50X45H 57	4		SX1	
51	0203-10080	NUT M10	1		**	
52	0302-10250	SW M10	1		**	
53	0311-10160	PW M10	1		**	
54	0091-20206	STUD BOLT 10X45	1		**	
55 -1	0012-21025	BOLT 10X25 T	3		**	
55 -2	0302-10250	SW M10	3		**	
55 -3	0311-10160	PW M10	3		**	
60	0203-10080	NUT M10	4		**	
61	0302-10250	SW M10	4		**	
62	0311-10160	PW M10	4		**	
70	4229-10020	ROLLER AY/152H	4		0JH	INCL. 71-75
71	4223-58800	ROLL/MVB-152H	4			
72	4223-58810	ROLL SHAFT/MVB-152H	4			
73	0499-20010	NEEDLE BEARING/INNER RING	8		**	
74	0606-02050	OIL SEAL / KE25525	16		**	
75	0460-06304	BEARING 6304DDU	16		**	

**MVB-152H**  
**VIBRATOR**  
**起振体**

**PDX0**





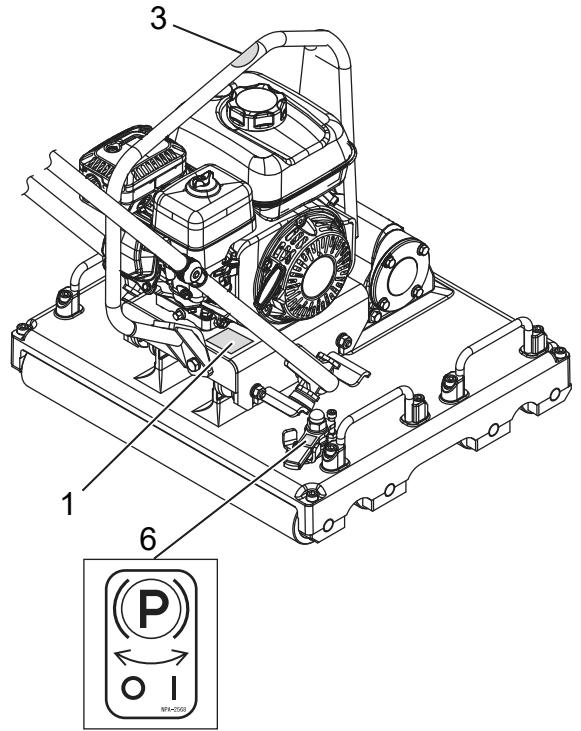
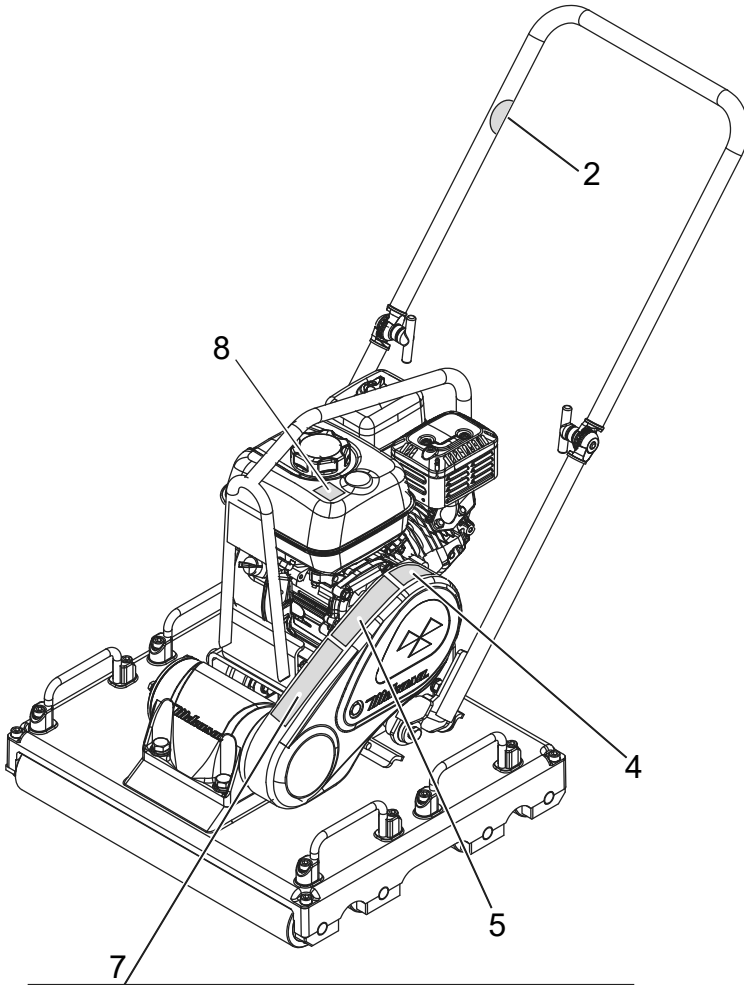


# MVB-152H

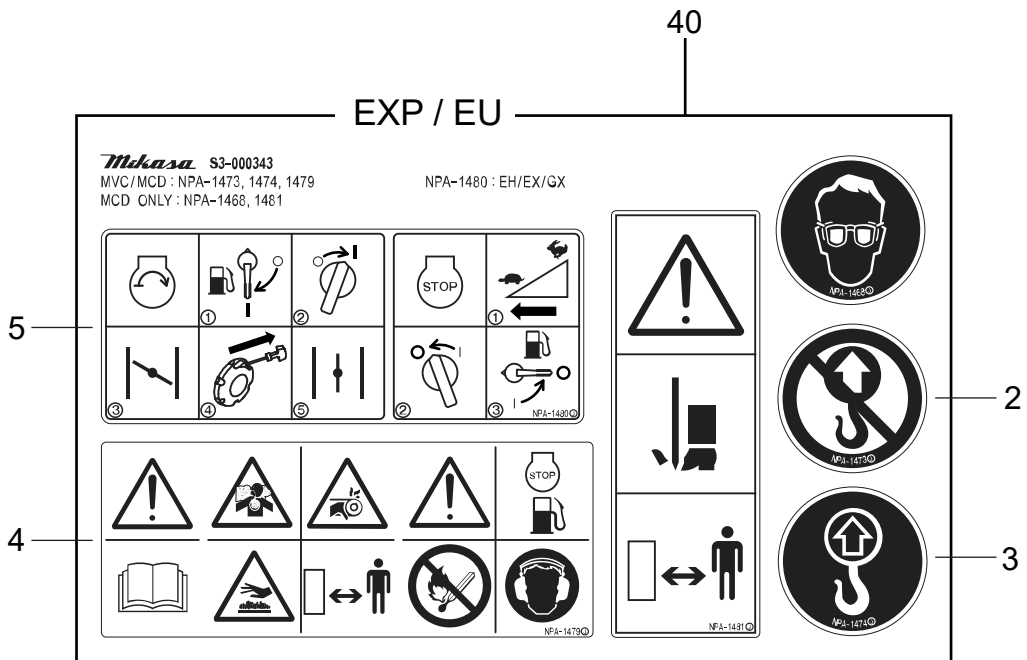
PDY0

## DECAL AND NAMEPLATE

### 銘板



**MVB-152**





*Mikasa*

MIKASA SANGYO CO., LTD.

1-4-3, Kanda-Sarugakucho, Chiyoda-ku, Tokyo, 101-0064, Japan

PRINTED IN JAPAN